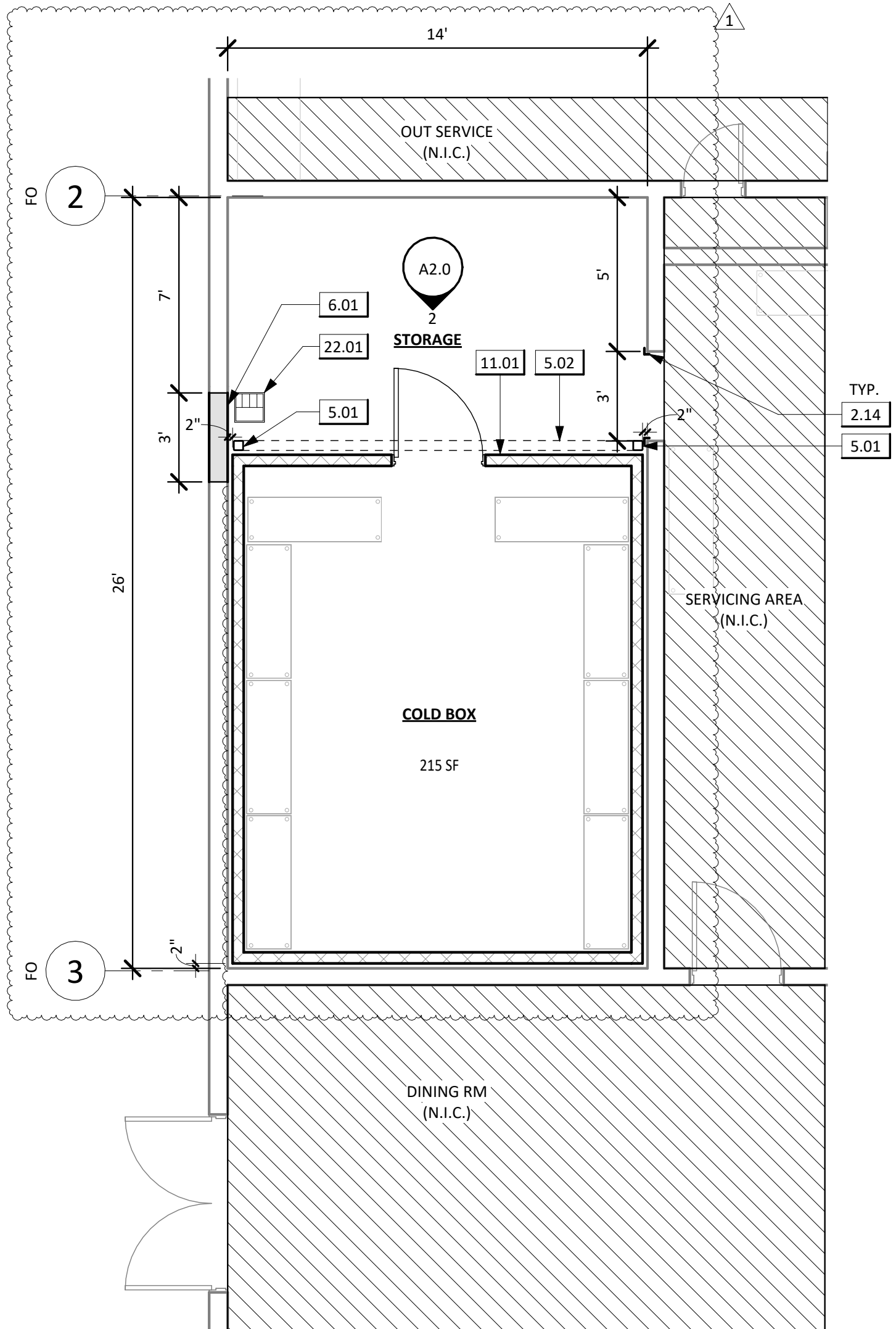
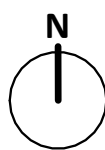


1 DEMOLITION FLOOR PLAN
1/4" = 1'-0"



2 PROPOSED FLOOR PLAN
1/4" = 1'-0"



FINISH SCHEDULE						
LOCATION	FLOOR	WALLS				CEILING FINISH
	FINISH	NORTH	EAST	SOUTH	WEST	
STORAGE	(E)SC	(E)PT/ACT	(E)PT/ACT	(E)PT/ACT	(E)PT/ACT	(E) PT

- FLOOR PLAN NOTES**
- CONTRACTOR TO FIELD VERIFY ALL DIMENSIONS.
 - ALL ITEMS REFERENCED ARE NEW UDN.
 - REFER TO GENERAL NOTES ON G1.0 - G1.3 FOR FURTHER INFORMATION & REQUIREMENTS.

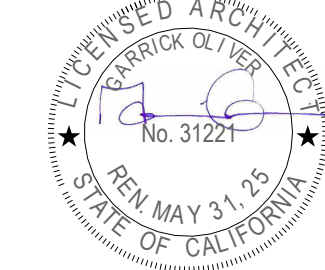
- LEGEND**
- SCOPE OF WORK
 - INSULATED WALL PANEL - PER COLD BOX MFG
 - (E) WALL TO REMAIN - PROTECT IN PLACE
 - INFILL WALL
 - NOT IN SCOPE

- FINISH LEGEND**
- PT PAINT

- MATERIAL LEGEND**
- SC SEALED CONCRETE
 - ACT PERFORATED ACOUSTIC TILES

- KEYNOTES**
- 2.07 (D) WINDOW - INFILL WALL PER DETAIL 1/A8.0
 - 2.14 (E) CORNER GUARD TO REMAIN - PROTECT IN PLACE
 - 5.01 6X6 POST - ATTACHMENT PER DETAIL 4/A8.0 & 8/A8.0 5
 - 5.02 6X8 HEADER - REFER TO 2/A8.0 & ATTACHMENT PER DETAIL 6/A8.0
 - 6.01 WALL INFILL - PER DETAIL 1/A8.0
 - 11.01 WALK-IN FREEZER - PER MFG
 - 22.01 FLOOR SINK - PER PLUMBING

FOR DSA REVIEW ONLY -
NOT FOR CONSTRUCTION



PREPARED FOR THE
BOARD OF EDUCATION

PREPARED BY THE
obdARCHITECTURE
2419 EL CAJON BLVD., SAN DIEGO, CA 92104

DEMOLITION AND PROPOSED ENLARGED

FLOOR PLAN

SAN DIEGO UNIFIED SCHOOL DISTRICT

KITCHEN MODIFICATIONS GROUP 6

CLAIREMONT HIGH SCHOOL

4150 UTE DR, SAN DIEGO, CA 92117

DSA SUBMITTAL SET

PROJECT NO. SDUF-006A
R.S. A.P.
FILE NAME
DATE 04/09/2025

REVISIONS
1 04/23/25
SHEET NO.
A1.1